

ROCKY MOUNTAIN SOUNDS

STELLAR CITY

OMNISPHERE 2 EXPANSION

JOHN LOUIS KLUCK





rms

ROCKY MOUNTAIN SOUNDS

THANK YOU!

We are thankful for your support in our patch designs and hope it will inspire your next sonic creation!

Jason Schoepfer and John Louis Kluck

Omnisphere 2 Installation

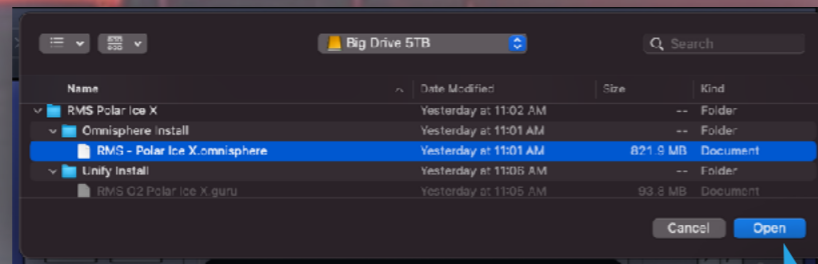
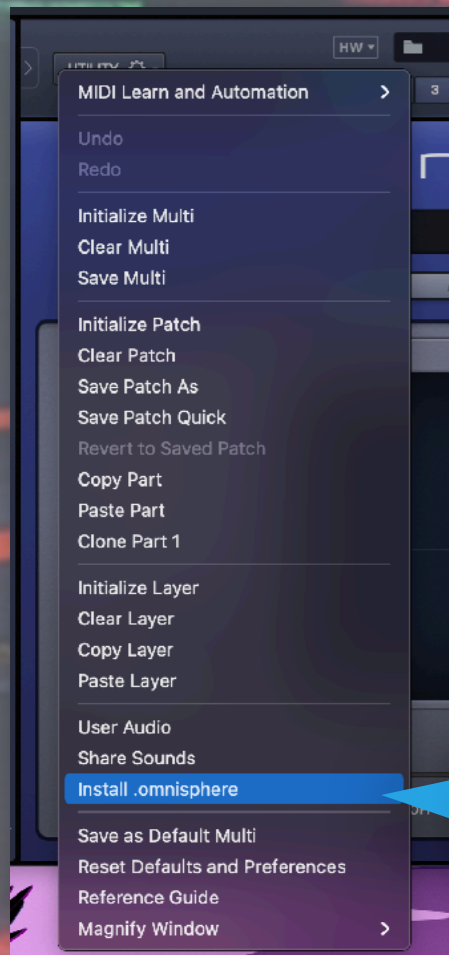


To install Stellar City for Omnisphere 2, first open up Omnisphere 2 (the standalone version is ideal as it removes any possible issues a DAW or host may add). *Screenshots show Polar Ice X (also available from RMS!)

- A. Select the **“UTILITY”** button on the interface as shown
- B. Scroll down and select **“Install .omnisphere”**
- C. Navigate to the unzipped download folder, select the Omnisphere Install folder, then select either **“RMS - Stellar City.omnisphere”** and click **“Open”**

D. Read the advisory notice and click **“Continue”**

E. This is the final step. The dialogue box will tell you the total number of multis, patches, and custom sound sources that will be installed. This is your last chance to stop installation. Clicking **“OK”** will install all the contents. After a short period of time, you will be able to start exploring your new sounds for Omnisphere 2!



With the latest versions of Omnisphere, a new feature is the ability to simply drag and drop a .omnisphere file directly onto an open instance of Omnisphere. This will install the library instantly.

ARP + BPM (10)

- ARP - Astro Pack
- ARP - Aurora's Dance
- ARP - Big Dipper
- ARP - Conexus
- ARP - Digitized
- ARP - Lost Cosmonaut
- ARP - Orbital
- ARP - Space Elevator
- ARP - Space Traveler
- ARP - Strange X (Times)

Pads + Strings (39)

- PAD - Astronautical
- PAD - CompuSpeak
- PAD - Dark Star
- PAD - Deep Space Encounter
- PAD - Dying Star's Retreat
- PAD - Emotive CS-80
- PAD - Europa
- PAD - Extraterrestrial Beings
- PAD - Extraterrestrial Cave Dwellers
- PAD - Fading Sunlight
- PAD - Friend or Foe
- PAD - Galactic Invader
- PAD - Gravitational Fields
- PAD - Homelands
- PAD - Ice Planet
- PAD - Intergalactic Patrons
- PAD - Light Fades Fast
- PAD - Lost Star
- PAD - Moons of Neptune
- PAD - Night Launch
- PAD - Obsolete Technology
- PAD - Roaming Satellite
- PAD - Sines of Intelligence
- PAD - Solar Eclipse

- PAD - Space Is A Cold, Cold Place
- PAD - Space Odyssey Drone
- PAD - Starlight
- PAD - Stellar City
- PAD - Stellar Symmetry
- PAD - This Island Earth
- PAD - Time Track
- PAD - Vangelis
- PAD - Venus Apogee
- PAD - Vortex
- PAD - Voyager 1
- PAD - Voyager 2
- PAD - Warped Light
- PAD - Water Worlds
- PAD - Zero Pressuren

Synth Mono (1)

- LEAD - Unidentified

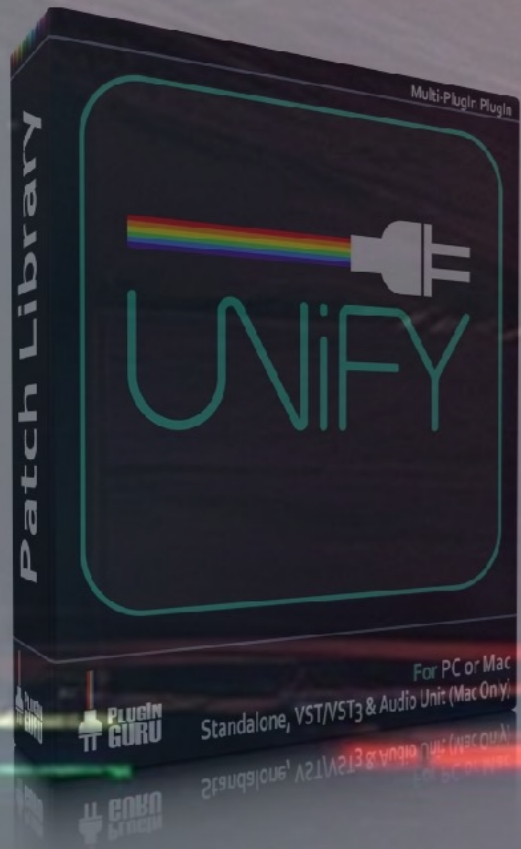
Combined Multis (25)

- PAD - 30 Seconds 2 Re-entry
- PAD - Battle of Planets
- PAD - Beyond Neptune
- PAD - Command Is Internal
- PAD - Direct Sunlight
- PAD - Dual Vortices
- PAD - Electric Wave
- PAD - Full Eclipse
- PAD - Galactic Groove
- PAD - Gantry to Glory
- PAD - Illustrated Moons
- PAD - Lumins
- PAD - Martian Winds
- PAD - Neptune's Revenge
- PAD - Night of Destiny
- PAD - Optimal Trajectory
- PAD - Prelude to Invasion
- PAD - Riders to the Stars
- PAD - Solar Flares
- PAD - Space Opera
- PAD - Starlight Becomes U
- PAD - Sunrise on Pluto
- PAD - Vortex of Time
- PAD - Weightless Nights
- PAD - Yearning For Home

Split Multis (25)

- PAD - Analog Tracking
- PAD - Clustered Stars

- PAD - Cold Fusion
- PAD - Constellations
- PAD - Einstein Paradox
- PAD - Epic Darkness
- PAD - Galactica
- PAD - In Tribute
- PAD - Interstellar Delite
- PAD - Kuiper Tones
- PAD - Lost Cosmonaut
- PAD - Lunar Parigee
- PAD - Mercury Transits The Sun
- PAD - Meteoroids
- PAD - Moon Invasion
- PAD - Orbiter Lights
- PAD - Quiet Space
- PAD - Rhythm of Intelligent Life
- PAD - Solaris Prime
- PAD - Sprites of Enceladus
- PAD - Stellar Event
- PAD - Strange Happenings
- PAD - Telemetry Inbound
- PAD - Transponder
- PAD - Venusian Drone



Unify Enhanced

Unify is a revolutionary new type of instrument that lets you layer, play, and combine AU, VST, or VST3 plug-ins to create new, inspiring, and outrageously creative sounds. Not only can you load your own plug-ins, but Unify also ships with its own built-in library of virtual instruments and audio effects, making it immediately ready to use right "out of the box".

Latest Unify manual - <https://pluginguru.net/unify/manual/>

This collection includes a special .guru file located in the Unify Install folder of your download. The following visuals show Polar Ice X (available at RMS) but apply to Stellar City.

To install, **FIRST make sure you have properly installed the .omnisphere master collection** - if you do not do this you will get errors with missing sound sources. Once installed, open up Unify (screen shot



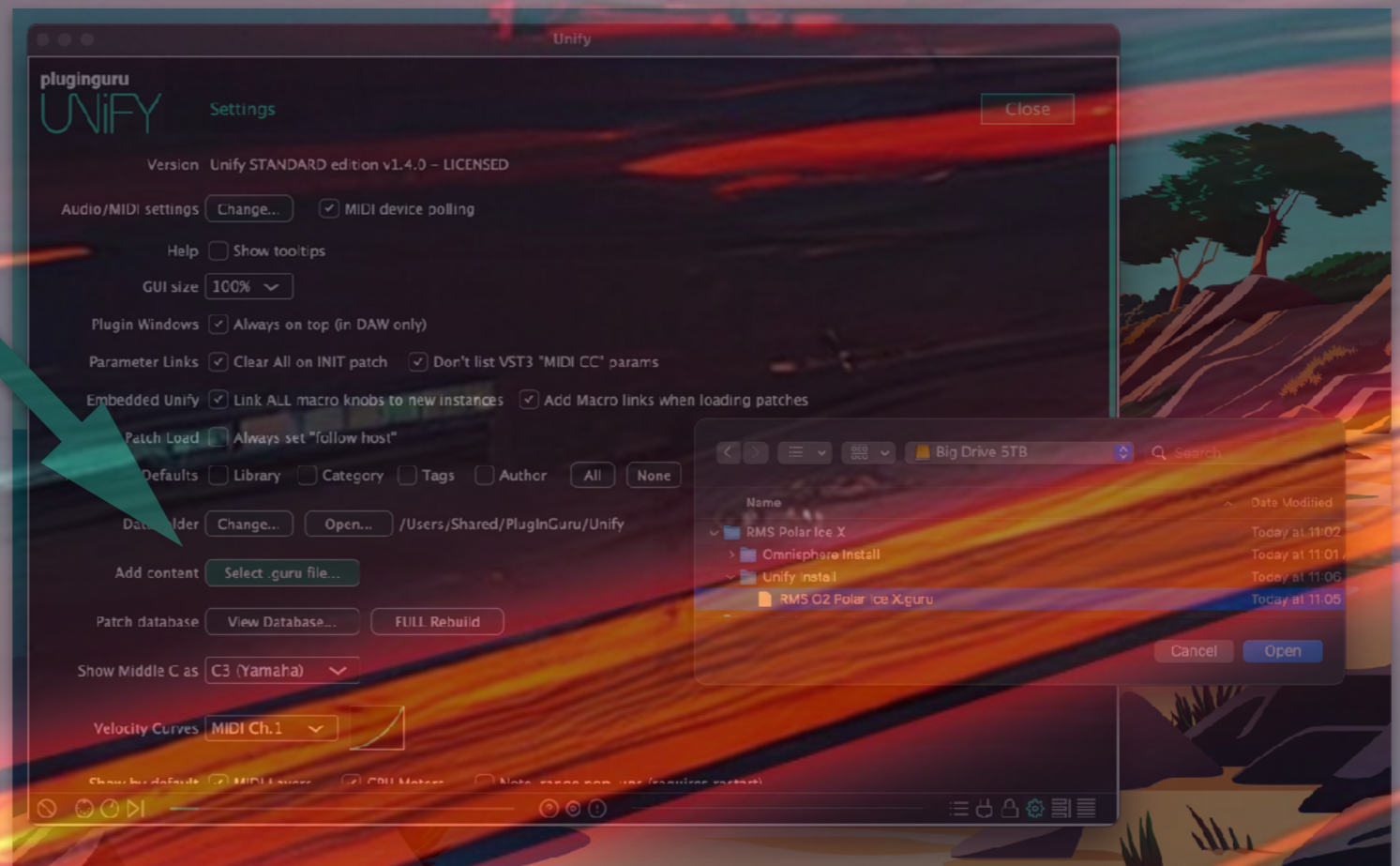
shows standalone version). Click on the gear icon to open up the setup menu

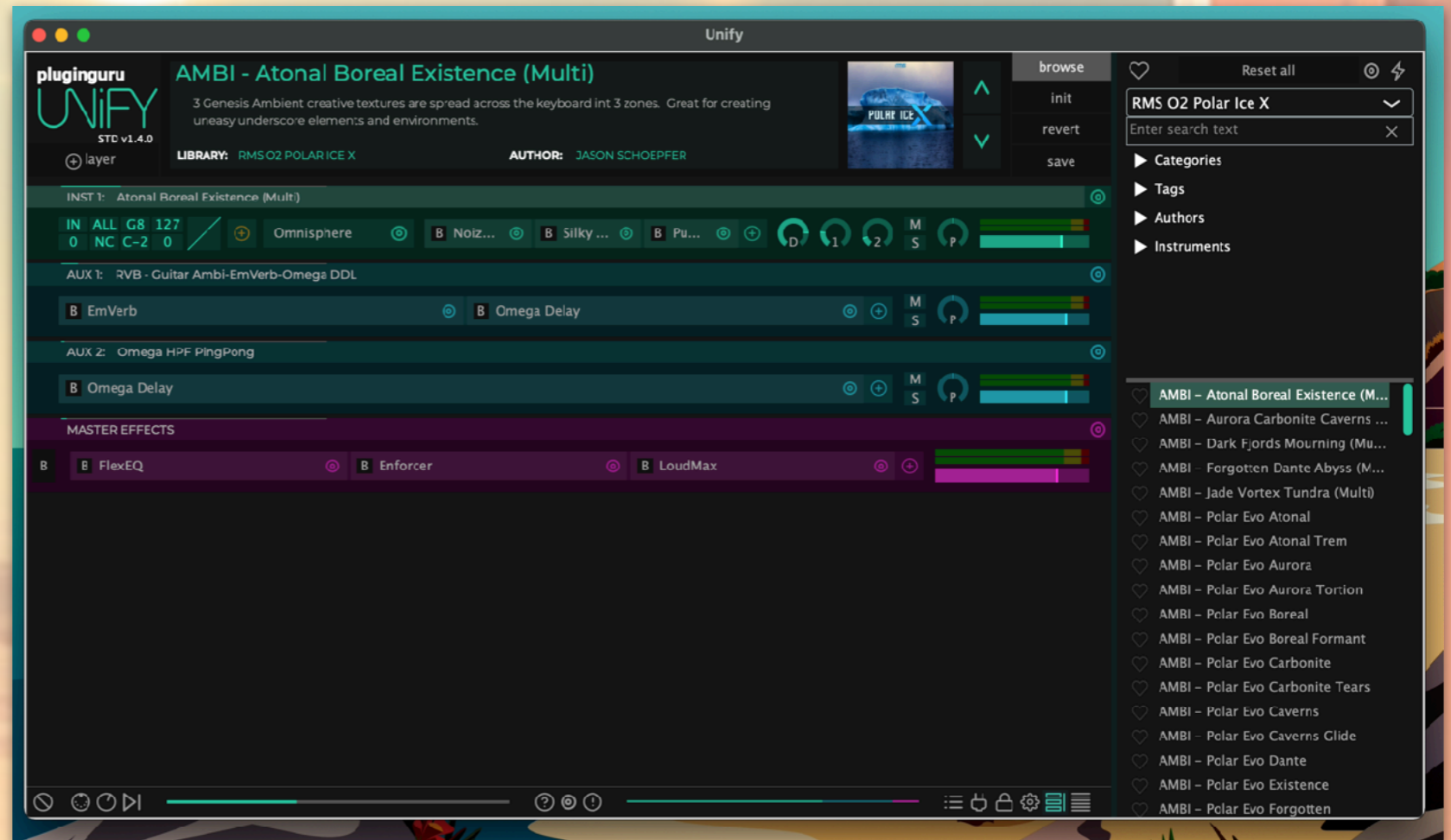
Click on the green "Select .guru file..."

Navigate to the Unify Install folder and select **RMS O2 Stellar City.guru**

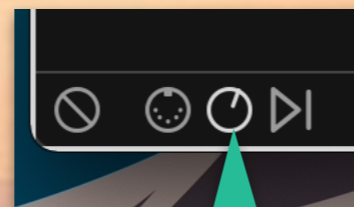
Follow on-screen instructions.

You have now installed the Unified version of your collection and can now easily enjoy every patch found in the standalone Omnisphere version plus additional bonus ARP versions which are very inspiring.

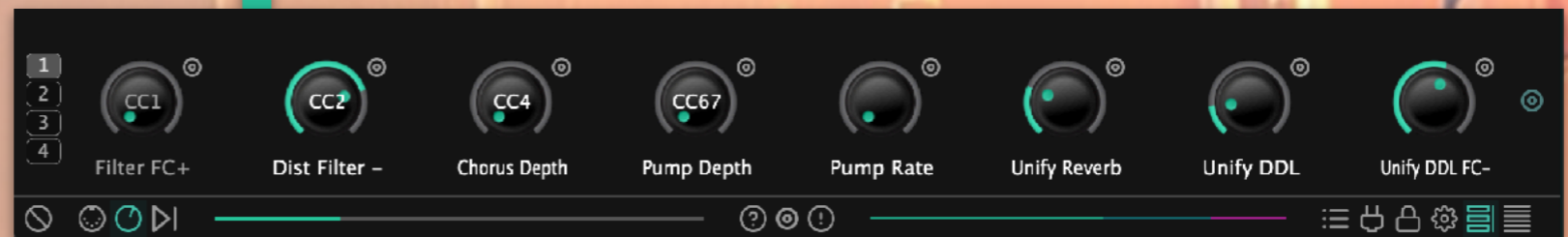




Each sound is mapped to the modwheel. If you click on the Omnisphere instrument box- this will open up Omnisphere.



Clicking on the macro knob icon will open up the macro knob panel - where each patch is mapped to creative FX like distortion, chorus, Pump House, reverb and delay. Explore these knobs as they can transform each sound in new and exciting ways (my personal favourite is Pump House - turn up the Pump Depth knob and enjoy!)



Easily combine patches together by SHIFT-CLICKING on new patches to insert the full Unify patch. It is an endless sonic exploration waiting for you dive in! ENJOY!

plugginguru UNIFY zSPLIT - Eastern Settlement
A fun combination of BPM bass, vox arp pluck and mnc lead
STD v1.4.0 LIBRARY: RMS O2 POLAR ICE X AUTHOR: JASON SCHOLPHER

INST 1: Juno One Oh Oh
IN ALL G8 127
0 NC C-2 0
Omnisphere B Noiz... B Silky... B Pu... D 1 2 M S P

INST 2: Ukpik
IN ALL G8 127
0 NC C-2 0
Omnisphere B Noiz... B Silky... B Pu... D 1 2 M S P

INST 3: AmbDuro PWM1
IN ALL G8 127
0 NC C-2 0
Omnisphere B Noiz... B Silky... B Pu... D 1 2 M S P

INST 4: Circular
IN ALL G8 127
0 NC C-2 0
Omnisphere B Noiz... B Silky... B Pu... D 1 2 M S P

INST 5: Sapphire Ahs
IN ALL G8 127
0 NC C-2 0
Omnisphere B Noiz... B Silky... B Pu... D 1 2 M S P

AUX 1: RVB - Guitar Ambi-EmVerb-Omega DDL
B EmVerb B Omega Delay M S P

AUX 2: Omega HPF PingPong
B Omega Delay M S P

MASTER EFFECTS
B FlexEQ B Enforcer B LoudMax

1 2 3 4
Filter FC+ Dist Filter - Chorus Depth Pump Depth Pump Rate Unify Reverb Unify DDL Unify DDL FC-

browse init revert save
RMS O2 Polar Ice X
Enter search text
Categories
Tags
Authors
Instruments



John Louis Kluck embarked on his musical journey in the 5th grade, honking away on a trumpet in Central Wisconsin. But after a brief stint of off-key notes, he switched to drums and percussion, and never looked back. It wasn't until high school that John discovered an electric organ hiding in the back of a practice room and his passion for keyboard playing truly ignited.

Fast forward one year after graduation, John was armed with a new Casio CZ-101 synthesizer, a Tascam cassette 4 track recorder, and a Yamaha RX-5 drum machine, ready to create his own original tracks.

As the 90s rolled on, John upgraded to a Roland JW-50 music workstation, which he used for close to 25 years, but eventually the spark for writing music on it faded.

But the pandemic came, and with it a renewed interest in music for John. Investing in a new midi controller, combined with free software, John dove headfirst into composing and producing ambient, new age, and fusion music. In just 2 years time, he has produced over 90 full-length releases. And his journey in sound design continued with the addition of Spectrasonics Omnisphere 2, where John began to design his own unique sound bank.

LICENSE AGREEMENT:

- I. ALL LICENSES ARE SINGLE-USER LICENSES.
- II. THE CONTENTS OF THIS SOUNDSET IS LICENSED AND NOT SOLD TO YOU.
- III. OWNERSHIP REMAINS WITH ROCKY MOUNTAIN SOUNDS.
- IV. ALL RIGHTS OF THE PRODUCER AND THE OWNER OF THE WORK ARE RESERVED.
- V. UNAUTHORIZED DUPLICATION OF ANY DOWNLOAD IS A VIOLATION OF APPLICABLE LAWS.
- VI. YOU MAY NOT DISTRIBUTE, SHARE, SUBLICENSE, LEND, LEASE OR OTHERWISE MAKE THE SOUNDSET CONTENT AVAILABLE TO ANY THIRD PARTY.
- VII. YOU MAY USE THE CONTENT OF THIS SOUNDSET IN YOUR OWN COMMERCIAL AND NON-COMMERCIAL PRODUCTIONS.
- VIII. THE INCLUDED SOUNDSOURCES CANNOT BE USED TO CREATE NEW COMMERCIAL PRESET RELEASES.
- IX. INSTALLING THESE PRODUCTS CONSTITUTES AN AGREEMENT TO THE TERMS

A futuristic cityscape at sunset. The sky is a mix of orange, yellow, and teal. In the foreground, there are dark, angular structures with glowing blue and red lights. A large, white, stylized 'rms' logo is centered in the image. Below the logo, the text 'ROCKY MOUNTAIN SOUNDS' and the website 'www.rockymountainsounds.com' are displayed in white. The background shows a city with tall buildings and a prominent tower, all bathed in the warm light of the setting sun.

rms

ROCKY MOUNTAIN SOUNDS
www.rockymountainsounds.com