

POLAR ICE





rms

ROCKY MOUNTAIN SOUNDS

THANK YOU!

I appreciate your purchase of this special collection of sounds for Spectrasonics Omnisphere 2. Polar Ice X is an enormous collection featuring almost 1100 patches and multis as well as custom soundsources. The sounds explore all the synth-focused samples found in Omnisphere as well as new Prophet 12 and Juno custom samples. "Genesis" creative looping samples also help to add new textures and underscore elements. Full PlugInGuru Unify support is included - see included installation guide at end of this manual. Enjoy this epic collection!

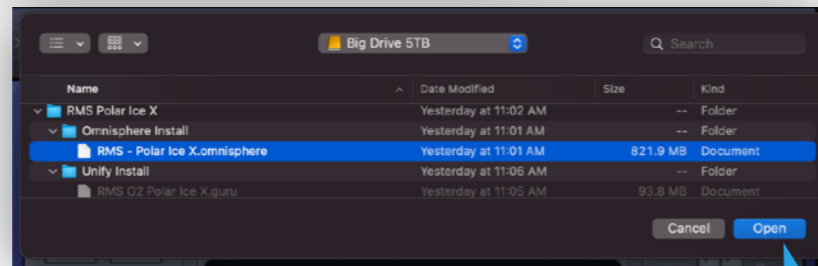
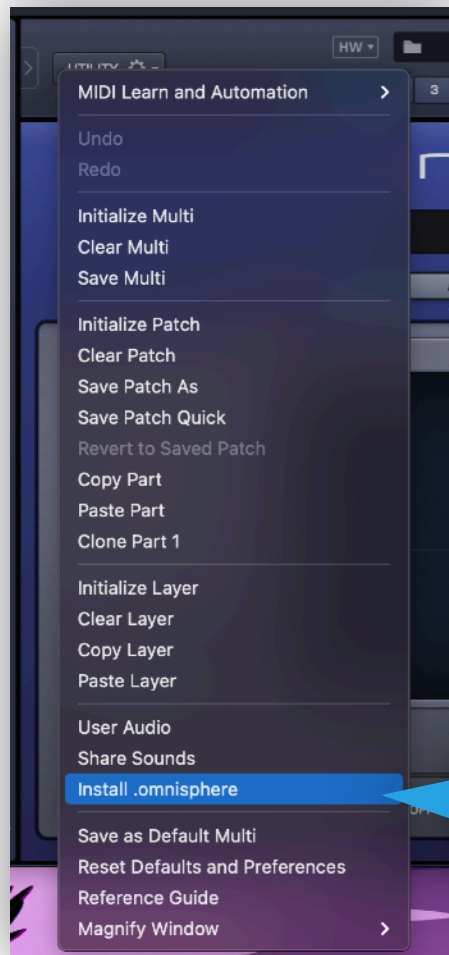
Jason Schoepfer - Sound Designer and owner of Rocky Mountain Sounds.

Omnisphere 2 Installation



To install Polar Ice X for Omnisphere 2, first open up Omnisphere 2 (the standalone version is ideal as it removes any possible issues a DAW or host may add).

- A. Select the **“UTILITY”** button on the interface as shown
- B. Scroll down and select **“Install .omnisphere”**
- C. Navigate to the unzipped download folder, select the Omnisphere Install folder, then select **“RMS - Polar Ice X.omnisphere”** and click **“Open”**



- D. Read the advisory notice and click **“Continue”**



- E. This is the final step. The dialogue box will tell you the total number of multis, patches, and custom sound sources that will be installed. This is your last chance to stop installation. Clicking **“OK”** will install all the contents. After a short period of time, you will be able to start exploring Polar Ice X for Omnisphere 2!



ARP + BPM (12)

BPM AMBI - Auroras Breath
BPM AMBI - Auroras Confusion
BPM AMBI - Auroras Light
BPM PAD - Junos Light
BPM PAD - Prophets Darkness
BPM PAD - Prophets Light
BPM PAD - Pulsating Aishihik
BPM PAD - Pulsating Alimiski
BPM PAD - Pulsating Amund
BPM PAD - Pulsating Axel Heiberg
BPM PAD - Pulsating Azure Ahs
BPM PAD - Pulsating Cerulean Ahs

Bell and Vibes (179)

BELL PAD - Aberdeen
BELL PAD - Ailvat
BELL PAD - Aishihik
BELL PAD - Aklarvik
BELL PAD - Alert
BELL PAD - Alimiski
BELL PAD - Alsek
BELL PAD - Alverstone
BELL PAD - Amadjuak
BELL PAD - Amund
BELL PAD - Angikuni
BELL PAD - Asgard
BELL PAD - Ashuanipi
BELL PAD - Atikonak
BELL PAD - Atlin
BELL PAD - Aulavik
BELL PAD - Axel Heiberg
BELL PAD - Ayles
BELL PAD - Baffin
BELL PAD - Barbeau Peak
BELL PAD - Bathurst Inlet
BELL PAD - Bylot
BELL PAD - Cambridge Bay
BELL PAD - Cassiar
BELL PAD - Cauchon
BELL PAD - Cordillera
BELL PAD - Denali Fault
BELL PAD - Desteffany
BELL PAD - Dezadeash
BELL PAD - Diomede
BELL PAD - Dubawnt
BELL PAD - East Bay
BELL PAD - Ekalluk Bell Pad Evolving
BELL PAD - Ekalluk
BELL PAD - Ekatuk Bell Pad Evolving
BELL PAD - Ekatuk
BELL PAD - Ellef
BELL PAD - Ellesmere
BELL PAD - Ennedai
BELL PAD - Enrigose
BELL PAD - Exeter
BELL PAD - Faber
BELL PAD - Fiord
BELL PAD - Firedrake
BELL PAD - Foothills
BELL PAD - Gander
BELL PAD - Glenlyon
BELL PAD - Greiner
BELL PAD - Hazen
BELL PAD - Hemisphere
BELL PAD - Herschel Island

BELL PAD - Hjalmer
BELL PAD - Hollman
BELL PAD - Hottah
BELL PAD - Ikaahuk
BELL PAD - Iqaluit
BELL PAD - Iridescent
BELL PAD - Jamesee
BELL PAD - Jayko
BELL PAD - Jost Lake
BELL PAD - Kakisa
BELL PAD - Kaminak
BELL PAD - Kaminuniak
BELL PAD - Kaomayok
BELL PAD - Kasba
BELL PAD - Kazan
BELL PAD - Kesagami
BELL PAD - Kiglikavik
BELL PAD - Kinnigait
BELL PAD - Kitiga
BELL PAD - Kluane
BELL PAD - Knorr
BELL PAD - Ktulik
BELL PAD - Kugaaruk
BELL PAD - Kugaituk
BELL PAD - Kusawa
BELL PAD - Lac Sakami
BELL PAD - Lake Hazen
BELL PAD - Lincoln Sea
BELL PAD - Lucania
BELL PAD - Magnetic
BELL PAD - Magues
BELL PAD - Milne
BELL PAD - Mistastin
BELL PAD - Nadaleen
BELL PAD - Nahoni
BELL PAD - Naina
BELL PAD - Nanook
BELL PAD - Nao Lake
BELL PAD - Napaktulik
BELL PAD - Nares
BELL PAD - Naujaat
BELL PAD - Nejanilini
BELL PAD - Neso
BELL PAD - Nettilling
BELL PAD - Nipishish
BELL PAD - Nisto
BELL PAD - Noctilucent
BELL PAD - Nonacho
BELL PAD - Northern
BELL PAD - Northwest
BELL PAD - Nueltin
BELL PAD - Nukap
BELL PAD - Odin
BELL PAD - Opocopa
BELL PAD - Otokwin
BELL PAD - Payuk
BELL PAD - Pellat
BELL PAD - Pipestone
BELL PAD - Playgreen
BELL PAD - Point Lake
BELL PAD - Polar Vortex
BELL PAD - Ptarmigan
BELL PAD - Putahow
BELL PAD - Qanik
BELL PAD - Quoich
BELL PAD - Resolute
BELL PAD - Ringnew
BELL PAD - Saint Elias
BELL PAD - Salliq
BELL PAD - Selwyn

BELL PAD - Senat
BELL PAD - Severn
BELL PAD - Shabogamo
BELL PAD - Shakwak
BELL PAD - Sipiwesk
BELL PAD - Sirmilik
BELL PAD - Sitidiyi
BELL PAD - Snafu
BELL PAD - Sterlet
BELL PAD - Suvai
BELL PAD - Sverdrup
BELL PAD - Tagish
BELL PAD - Tahiryuak
BELL PAD - Taloyoak
BELL PAD - Tarai
BELL PAD - Tarfu
BELL PAD - Tathlina
BELL PAD - Tazin
BELL PAD - Tebesjuak
BELL PAD - Teslin
BELL PAD - Thelon
BELL PAD - Thonokeid
BELL PAD - Thule
BELL PAD - Tintina Fault
BELL PAD - Torngat
BELL PAD - Tulemalu
BELL PAD - Ukpik
BELL PAD - Wapikopa
BELL PAD - Wapusk
BELL PAD - Welewet
BELL PAD - Wernecke
BELL PAD - Wholdaia
BELL PAD - Whollaston
BELL PAD - Winisk
BELL PAD - Wintering
BELL PAD - Witchai
BELL PAD - Yamba
BELL PAD - Yathkyed
BELL PAD - Zeta
ICE PAD - Aberdeen
ICE PAD - Aishihik
ICE PAD - Baffin
ICE PAD - Ellef
ICE PAD - Faber
ICE PAD - Greiner
ICE PAD - Holman
ICE PAD - Iqaluit
ICE PAD - Iridescent Shores
ICE PAD - Kaminak
ICE PAD - Magnetic
ICE PAD - Nanook
ICE PAD - Otokwin
ICE PAD - Quoich
ICE PAD - Sirmilik
ICE PAD - Tahiryuak
ICE PAD - Taloyoak
ICE PAD - Ukpik Shores
ICE PAD - Yathkyed Shores

Evolving (115)

ORB PAD - Ailvat Pad
ORB PAD - Alert Pad
ORB PAD - Angikuni Pad
ORB PAD - Atikonak Pad
ORB PAD - Aulavik Bell Pad
ORB PAD - Aulavik Pad
ORB PAD - Ayles Pad
ORB PAD - Azure Ahs Pad

ORB PAD - Azure Mms Pad
ORB PAD - Azure Oos Pad
ORB PAD - Baffin Bell Pad
ORB PAD - Baffin Pad
ORB PAD - Cerulean Ahs Pad
ORB PAD - Cerulean Mms Pad
ORB PAD - Cerulean Oos Pad
ORB PAD - Cobalt Ahs Pad
ORB PAD - Cobalt Mms Pad
ORB PAD - Cobalt Oos Pad
ORB PAD - Denali Fault Pad
ORB PAD - Desteffany Pad
ORB PAD - Dubawnt Pad
ORB PAD - Ekalluk Pad
ORB PAD - Ekatuk Pad
ORB PAD - Enrigose Bell Pad
ORB PAD - Enrigose Pad
ORB PAD - Exeter Pad
ORB PAD - Faber Pad
ORB PAD - Foothills Pad
ORB PAD - Gander Pad
ORB PAD - Greiner Bell Pad
ORB PAD - Greiner Pad
ORB PAD - Hazen Pad
ORB PAD - Iqaluit Pad
ORB PAD - Jamesee Bell Pad
ORB PAD - Jamesee Pad
ORB PAD - Jayko Bell Pad
ORB PAD - Jayko Pad
ORB PAD - Juno PWM0 Frost
ORB PAD - Juno PWM1 Frost
ORB PAD - Juno PWM2 Frost
ORB PAD - Juno PWM3 Frost
ORB PAD - Juno PWM4 Frost
ORB PAD - Juno Saw Frost
ORB PAD - Juno Saw Sub Frost
ORB PAD - Juno Sqr Sub Frost
ORB PAD - Juno Sub Frost
ORB PAD - Kaminak Pad
ORB PAD - Kaminuniak Pad
ORB PAD - Kaomayok Bell Pad
ORB PAD - Kaomayok Pad
ORB PAD - Kazan Pad
ORB PAD - Kigaituk Bell Pad
ORB PAD - Kiglikavik Pad
ORB PAD - Kitiga Bell Pad
ORB PAD - Kitiga Pad
ORB PAD - Kluane Pad
ORB PAD - Kugaituk Pad
ORB PAD - Lake Hazen Bell Pad
ORB PAD - Lake Hazen Pad
ORB PAD - Lincoln Sea Bell Pad
ORB PAD - Milne Pad
ORB PAD - Naina Pad
ORB PAD - Nanook Bell Pad
ORB PAD - Nanook Pad
ORB PAD - Napaktulik Bell Pad
ORB PAD - Napaktulik Dawn Pad
ORB PAD - Napaktulik Dirty Peak Pad
ORB PAD - Napaktulik Horizon Pad
ORB PAD - Napaktulik JP-8 Pad
ORB PAD - Napaktulik JP-8000 Pad
ORB PAD - Napaktulik Juno 60 Pad
ORB PAD - Napaktulik JX-3P Pad
ORB PAD - Napaktulik LP Pad
ORB PAD - Napaktulik Pad
ORB PAD - Napaktulik Prologue Pad
ORB PAD - Napaktulik Sunrise Pad
ORB PAD - Napaktulik Trek Pad
ORB PAD - Nares Bell Pad

ORB PAD - Nares Pad
ORB PAD - Naujaat Pad
ORB PAD - Nausen Bell Pad
ORB PAD - Northwest Passage Pad
ORB PAD - Nukap Pad
ORB PAD - Odin Pad
ORB PAD - Pellat Pad
ORB PAD - Playgreen Pad
ORB PAD - Ptarmigan Pad
ORB PAD - Qanik Pad
ORB PAD - Sapphire Ahs Pad
ORB PAD - Sapphire Ees Pad
ORB PAD - Sapphire Flow Pad
ORB PAD - Sapphire Mms Pad
ORB PAD - Sapphire Ohs Pad
ORB PAD - Sapphire Oos Pad
ORB PAD - Senat Pad
ORB PAD - Snafu Pad
ORB PAD - Sterlet Pad
ORB PAD - Suvai Pad
ORB PAD - Tahiryuak Bell Pad
ORB PAD - Tahiryuak Pluck
ORB PAD - Tahiryuak
ORB PAD - Taloyoak Pad
ORB PAD - Tarai Pad
ORB PAD - Tebesjuak Pad
ORB PAD - Tehek Pad
ORB PAD - Teslin Pad
ORB PAD - Thelon Pad
ORB PAD - Thonokeid Pad
ORB PAD - Thule Pad
ORB PAD - Tintina Fault Pad
ORB PAD - Tulemalu Pad
ORB PAD - Ukpik Pad
ORB PAD - Yamba Pad
ORB PAD - Yathkyed Pad
ORB PAD - Zeta Bell Pad

Human Voices (47)

ICE VOX - Azure Ahs
ICE VOX - Azure Mms
ICE VOX - Azure Oos
ICE VOX - Cerulean Ahs
ICE VOX - Cerulean Mms
ICE VOX - Cerulean Oos
VOX - Arctic Choir
VOX - Autumn Glory
VOX - Autumn Joy
VOX - Autumn Memories
VOX - Azure Ahs Celestial
VOX - Azure Ahs
VOX - Azure Mms Celestial
VOX - Azure Mms
VOX - Azure Oos Celestial
VOX - Azure Oos
VOX - Cerulean Ahs Shores
VOX - Cerulean Ahs
VOX - Cerulean Mms Shores
VOX - Cerulean Mms
VOX - Cerulean Oos Shores
VOX - Cerulean Oos
VOX - Choir of the Titanic
VOX - Cobalt Ahs Shores
VOX - Cobalt Ahs
VOX - Cobalt Mms Shores
VOX - Cobalt Mms
VOX - Cobalt Oos Shores
VOX - Cobalt Oos

VOX - Endless Azure Shores
VOX - Endless Azure Tides
VOX - Glacier Angels
VOX - Ice Crystals I
VOX - Ice Crystals II
VOX - Ice Crystals III
VOX - Sapphire Ahs Shores
VOX - Sapphire Ahs
VOX - Sapphire Mms Shores
VOX - Sapphire Mms
VOX - Sapphire Oos Shores
VOX - Sapphire Oos
VOX - Shores of Juno
VOX - Stratus Straights
VOX BELL - Arctic Passage
VOX BELL - Choir of the Titanic
VOX BELL - Journey North
VOX BELL - Stratus Heights

Pads + Strings (253)

PAD - Aberdeen
PAD - Ailvat
PAD - Aishihik Shores
PAD - Aishihik
PAD - Alert
PAD - Alimiski
PAD - Alsek
PAD - Alverstone Pad X-Fade
PAD - Alverstone
PAD - Amadjuak
PAD - Amund
PAD - Angikuni
PAD - Ashuanipi Shores
PAD - Ashuanipi
PAD - Atikonak
PAD - Atlin
PAD - Aulavik
PAD - Axel Heiberg
PAD - Ayles
PAD - Baffin Pad X-Fade
PAD - Baffin Shores
PAD - Baffin
PAD - Bylot Pad X-Fade
PAD - Bylot
PAD - Cabria Glacier Shores
PAD - Cabria Glacier
PAD - Cassiar Shores
PAD - Cassiar
PAD - Cauchon Shores
PAD - Cauchon
PAD - Denali Fault Pad HPF
PAD - Denali Fault Pad SVF
PAD - Denali Fault Pad X-Fade
PAD - Denali Fault
PAD - Desteffany Pad X-Fade
PAD - Desteffany
PAD - Dezadeash
PAD - Dubawnt
PAD - East Bay Shores
PAD - East Bay
PAD - Ekalluk Pad X-Fade
PAD - Ekalluk
PAD - Ekatuk
PAD - Ellef Pad X-Fade
PAD - Ellef
PAD - Ellesmere
PAD - Ennedai
PAD - Enrigose

PAD - Exeter
PAD - Faber
PAD - Fiord
PAD - Foothills
PAD - Frozen Night Terrors
PAD - Gander
PAD - Glenlyon Pad X-Fade
PAD - Glenlyon
PAD - Greiner
PAD - Hazen
PAD - Hemisphere
PAD - Hjalmer
PAD - Holman
PAD - Hottah
PAD - Ice Grains Baritone
PAD - Ice Grains Boys Choir
PAD - Ice Grains Broken
PAD - Ice Grains Childrens Choir
PAD - Ice Grains Choir
PAD - Ice Grains DuoAhhh
PAD - Ice Grains DuoBoing
PAD - Ice Grains DuoBzzzzz
PAD - Ice Grains DuoChurch
PAD - Ice Grains DuoGothic
PAD - Ice Grains DuoMeh
PAD - Ice Grains DuoMellow
PAD - Ice Grains DuoMellowSqr
PAD - Ice Grains DuoMuted
PAD - Ice Grains DuoNasal
PAD - Ice Grains DuoOhhh
PAD - Ice Grains DuoPulse
PAD - Ice Grains DuoRedNoise
PAD - Ice Grains DuoSaw
PAD - Ice Grains DuoShrill
PAD - Ice Grains DuoTines
PAD - Ice Grains DuoTri
PAD - Ice Grains DuoTriSaw
PAD - Ice Grains Good Shepherd
PAD - Ice Grains Gospel Choir
PAD - Ice Grains Gregorian Choir
PAD - Ice Grains Mens Choir
PAD - Ice Grains Pop Female
PAD - Ice Grains Pop Male
PAD - Ice Grains PWM 00
PAD - Ice Grains PWM 01
PAD - Ice Grains PWM 02
PAD - Ice Grains PWM 03
PAD - Ice Grains PWM 04
PAD - Ice Grains Saw Sub
PAD - Ice Grains Sqr Sub
PAD - Ice Grains Sub
PAD - Ice Grains Womens Choir
PAD - Iqaluit Pad X-Fade
PAD - Iqaluit
PAD - Iridescent Shores
PAD - Iridescent
PAD - Jamesee
PAD - Jayko
PAD - Jost Lake
PAD - Juneau Icefield
PAD - Juno Solina
PAD - Kakisa
PAD - Kaminak
PAD - Kaminuniak
PAD - Kaomayok
PAD - Kasba
PAD - Kazan
PAD - Kesagami
PAD - Kiglikavik Pad X-Fade

PAD - Kiglikavik
PAD - Kinngait
PAD - Kitiga Pad X-Fade
PAD - Kitiga
PAD - Kluane
PAD - Knorr
PAD - Ktulik
PAD - Kugaaruk
PAD - Kugaituk
PAD - Lac Sakami Shores
PAD - Lac Sakami
PAD - Lake Hazen
PAD - Lucania
PAD - Magnetic
PAD - Maguse
PAD - Margerie Glacier
PAD - Milne
PAD - Mistastin
PAD - Monarch Icefield
PAD - Nadaleen
PAD - Nahoni
PAD - Naina
PAD - Nanook
PAD - Nao Lake
PAD - Napaktulik
PAD - Nares
PAD - Naujaat
PAD - Nejanilini
PAD - Nettilling
PAD - Nipishish
PAD - Nisto
PAD - Noctilucent Shores
PAD - Noctilucent
PAD - Northwest Passage
PAD - Northwest
PAD - Nueltin
PAD - Nukap
PAD - Odin
PAD - Opocopa
PAD - Otoskwin
PAD - P12 Ahhh Canyons
PAD - P12 Alert
PAD - P12 Amund
PAD - P12 Boing Canyons
PAD - P12 Bzzzzz Canyons
PAD - P12 Bylot
PAD - P12 Church Canyons
PAD - P12 East Bay
PAD - P12 Enrigose
PAD - P12 Fiord
PAD - P12 Gothic Canyons
PAD - P12 Magnetic
PAD - P12 Meh Canyons
PAD - P12 Mellow Canyons
PAD - P12 Muted Canyons
PAD - P12 Nares
PAD - P12 Nasal Canyons
PAD - P12 Nukap
PAD - P12 Odin
PAD - P12 Ohhh Canyons
PAD - P12 Pipestone
PAD - P12 Point Lake
PAD - P12 Pulse Canyons
PAD - P12 Saw Canyons
PAD - P12 Selwyn
PAD - P12 Shrill Canyons
PAD - P12 Sterlet
PAD - P12 Teslin
PAD - P12 Thule
PAD - P12 Tines Canyons

PAD - P12 Tri Canyons
PAD - P12 TriSaw Canyons
PAD - P12 TuleMalu
PAD - Payuk
PAD - Pellat
PAD - Pipestone
PAD - Playgreen
PAD - Point Lake
PAD - Polar Vortex
PAD - Powder Mountain
PAD - Ptarmigan
PAD - Putahow
PAD - Qanik
PAD - Quoich Shores
PAD - Quoich
PAD - Resolute
PAD - Ringnew
PAD - Saint Elias
PAD - Salliq
PAD - Scimitar Glacier
PAD - Selwyn
PAD - Senat
PAD - Severn
PAD - Shabogamo
PAD - Shakwak
PAD - Silverthrone Glacier
PAD - Sipiwesik
PAD - Sirmilik
PAD - Sitidyi
PAD - Snafu
PAD - Sterlet
PAD - Suvai
PAD - Sverdrup
PAD - Tagish
PAD - Tahiryuak
PAD - Taloyoak
PAD - Tarai
PAD - Tarfu
PAD - Tathlina
PAD - Tazin
PAD - Tebesjuak
PAD - Tehek
PAD - Teslin
PAD - Thelon
PAD - Thonokeid
PAD - Thule
PAD - Tintina Fault
PAD - Torngat
PAD - Tulemalu
PAD - Ukpik Shores
PAD - Ukpik
PAD - Waddington Glacier
PAD - Wapikopa
PAD - Wapusk
PAD - Weleweti
PAD - Wernecke
PAD - Wholdaia
PAD - Whollaston Dawn
PAD - Whollaston
PAD - Winisk
PAD - Wintering
PAD - Witchai
PAD - Yamba
PAD - Yathkyed Shores
PAD - Yathkyed

Synth Bass (147)

BASS - Bearspaw Angst

BASS - Bearspaw Cavern
BASS - Bearspaw Clean
BASS - Bearspaw Den
BASS - Bearspaw Fraility
BASS - Bearspaw Lair
BASS - Bearspaw Meadow
BASS - Carbon Touch
BASS - Carbonite
BASS - Clean Carbon
BASS - Deep Carbon
BASS - Juno One Oh Four
BASS - Juno One Oh Oh
BASS - Juno One Oh One
BASS - Juno One Oh Saw Sub
BASS - Juno One Oh Saw
BASS - Juno One Oh Sqr Sub
BASS - Juno One Oh Sub
BASS - Juno One Oh Three
BASS - Juno One Oh Two
BASS - P12 DuoAhhh Rubber
BASS - P12 DuoAhhh X
BASS - P12 DuoAhhh
BASS - P12 DuoBoing Rubber
BASS - P12 DuoBoing X
BASS - P12 DuoBoing
BASS - P12 DuoBuzzz Rubber
BASS - P12 DuoBuzzz X
BASS - P12 DuoBuzzz
BASS - P12 DuoChurch Rubber
BASS - P12 DuoChurch X
BASS - P12 DuoChurch
BASS - P12 DuoGothic Rubber
BASS - P12 DuoGothic X
BASS - P12 DuoGothic
BASS - P12 DuoMeh X
BASS - P12 DuoMeh
BASS - P12 DuoMellow X
BASS - P12 DuoMellow
BASS - P12 DuoMellowSqr X
BASS - P12 DuoMellowSqr
BASS - P12 DuoMuted X
BASS - P12 DuoMuted
BASS - P12 DuoNasal X
BASS - P12 DuoNasal
BASS - P12 DuoOhhh X
BASS - P12 DuoOhhh
BASS - P12 DuoOhhh
BASS - P12 DuoPulse X
BASS - P12 DuoPulse
BASS - P12 DuoSaw X
BASS - P12 DuoSaw
BASS - P12 DuoShrill X
BASS - P12 DuoShrill
BASS - P12 DuoTines X
BASS - P12 DuoTines
BASS - P12 DuoTri X
BASS - P12 DuoTri
BASS - P12 DuoTriSaw X
BASS - P12 DuoTriSaw
BASS - Smooth Carbon 2
BASS - Smooth Carbon
BASS - Smooth Prophet DuoAhhh
BASS - Smooth Prophet DuoBoing
BASS - Smooth Prophet DuoBuzzz
BASS - Smooth Prophet DuoChurch
BASS - Smooth Prophet DuoGothic
BASS - Smooth Prophet DuoMeh
BASS - Smooth Prophet DuoMellow
BASS - Smooth Prophet DuoMellowSqr
BASS - Smooth Prophet DuoMuted
BASS - Smooth Prophet DuoNasal

BASS - Smooth Prophet DuoOhhh
BASS - Smooth Prophet DuoPulse
BASS - Smooth Prophet DuoSaw
BASS - Smooth Prophet DuoShrill
BASS - Smooth Prophet DuoTines
BASS - Smooth Prophet DuoTri
BASS - Smooth Prophet DuoTriSaw
BASS PLUCK - A Solid German
BASS PLUCK - Barbaric
BASS PLUCK - Big Boy
BASS PLUCK - Bothered
BASS PLUCK - Brutallizer
BASS PLUCK - Buzz-O-Mega
BASS PLUCK - Dre Sub Bass
BASS PLUCK - Electrobaby
BASS PLUCK - Fearless Saw
BASS PLUCK - Feedbacker
BASS PLUCK - French Connection 1
BASS PLUCK - French Connection 2
BASS PLUCK - Ground Shaker
BASS PLUCK - Grumpy
BASS PLUCK - Hi Res Buzz
BASS PLUCK - Hip Hop Buzz
BASS PLUCK - Inglewood
BASS PLUCK - JU06 PWM 00
BASS PLUCK - JU06 PWM 01
BASS PLUCK - JU06 PWM 02
BASS PLUCK - JU06 PWM 03
BASS PLUCK - JU06 PWM 04
BASS PLUCK - JU06 Saw
BASS PLUCK - JU06 Sqr Sub
BASS PLUCK - JU06 Sub Saw
BASS PLUCK - JU06 Sub
BASS PLUCK - Juno Time
BASS PLUCK - Large Teeth
BASS PLUCK - Metal Fifths
BASS PLUCK - Metal Warmth
BASS PLUCK - Micro Fifths
BASS PLUCK - Miffed
BASS PLUCK - Monster Phatty
BASS PLUCK - Nineties Surprise
BASS PLUCK - Octametal
BASS PLUCK - P12 DuoAhhh
BASS PLUCK - P12 DuoBoing
BASS PLUCK - P12 DuoBuzzz
BASS PLUCK - P12 DuoChurch
BASS PLUCK - P12 DuoGothic
BASS PLUCK - P12 DuoMeh
BASS PLUCK - P12 DuoMellow
BASS PLUCK - P12 DuoMellowSqr
BASS PLUCK - P12 DuoMuted
BASS PLUCK - P12 DuoNasal
BASS PLUCK - P12 DuoOhhh
BASS PLUCK - P12 DuoPulse
BASS PLUCK - P12 DuoSaw
BASS PLUCK - P12 DuoShrill
BASS PLUCK - P12 DuoTines
BASS PLUCK - P12 DuoTri
BASS PLUCK - P12 DuoTriSaw
BASS PLUCK - P12 DuoTri
BASS PLUCK - P12 DuoTriSaw
BASS PLUCK - Plastique Dog
BASS PLUCK - Power Grid
BASS PLUCK - Power Sub
BASS PLUCK - Rap Battles
BASS PLUCK - Retro Fringe
BASS PLUCK - Rounded Edges
BASS PLUCK - Rude Dude
BASS PLUCK - Ruthless
BASS PLUCK - sHomega
BASS PLUCK - Snaggletooth
BASS PLUCK - Sub Teeth

BASS PLUCK - Table Square
BASS PLUCK - Toothpick
BASS PLUCK - Trance Depths
BASS PLUCK - Trance Pulse FM
BASS PLUCK - Voltage Binaries
BASS PLUCK - X-Mod King

Synth Mono (10)

LEAD - AmbiJuno PWM 1
LEAD - AmbiJuno PWM 2
LEAD - AmbiJuno PWM 3
LEAD - AmbiJuno PWM 4
LEAD - AmbiJuno PWM 5
LEAD - AmbiJuno Saw Sub
LEAD - AmbiJuno Saw
LEAD - AmbiJuno Sqr Sub
LEAD - AmbiJuno Sub
LEAD - Playgreen

Synth Pluck (196)

ICE PLUCK - Cherubs
ICE PLUCK - Clean Bells
ICE PLUCK - Crystal Vowels
ICE PLUCK - Frigid
ICE PLUCK - Green Vox
ICE PLUCK - Hollow Ring
ICE PLUCK - JD Bells
ICE PLUCK - Klack
ICE PLUCK - Lo-Bit Bells
ICE PLUCK - Microwaved Bells
ICE PLUCK - Nostalgic CPU
ICE PLUCK - Plastic Bell
ICE PLUCK - Purity Bells
ICE PLUCK - Transistor Chimes
ICE PLUCK - Vibey Bells
PLUCK - AnaDelayed JS
PLUCK - Analogue PWM
PLUCK - ARP 2600 Pulse
PLUCK - ARP 2600 Saw
PLUCK - ARP 2600 SineSaw
PLUCK - ARP 2600 SineTri
PLUCK - ARP 2600 Square
PLUCK - ARP Odyssey Square
PLUCK - Cherubs
PLUCK - Chorale
PLUCK - Circle in Square
PLUCK - Circular
PLUCK - Clean Bells
PLUCK - Crystal Vowels
PLUCK - Crystallized
PLUCK - EDP Wasp Square
PLUCK - Femme Laser
PLUCK - Folded Sine Saw
PLUCK - Folded Sine
PLUCK - Formented
PLUCK - Fractal Buzz
PLUCK - Frigid
PLUCK - Generated Saw
PLUCK - Generated Sine
PLUCK - Generated Square
PLUCK - Gleeeful
PLUCK - Glottis
PLUCK - Green Rubber
PLUCK - Green Vox
PLUCK - Hamburg Saw
PLUCK - Hamburg Square

PLUCK - Harsh Chimes
PLUCK - Hollow Ring
PLUCK - JD Bells
PLUCK - JD-800 FATSquare
PLUCK - JD-800 SynSaw
PLUCK - JP-8 PWM
PLUCK - JP-8 Saw
PLUCK - JP-8 Square
PLUCK - JP-8 Triangle
PLUCK - JP-8000 PWM
PLUCK - JP-8000 Saw Fat
PLUCK - JP-8000 Square
PLUCK - JP-8000 Supersaw
PLUCK - JP-8000 Triangle
PLUCK - Juno 60 PWM
PLUCK - Juno 60 Saw PWM
PLUCK - Juno 60 Saw
PLUCK - Juno 60 Square
PLUCK - Juno 60 SquareSaw
PLUCK - Juno 60 Sub PWM
PLUCK - Juno 60 Sub
PLUCK - Juno 60 SubPulse
PLUCK - Juno 106 Saw
PLUCK - Juno 106 Square
PLUCK - Juno 106 Sub
PLUCK - JX-3P Square
PLUCK - JX-3P Thin Pulse
PLUCK - Klack
PLUCK - Little Chapel
PLUCK - Little Phatty Momma Square
PLUCK - Lo-Bit Bells
PLUCK - Microbrute Sub
PLUCK - Microwaved Bells
PLUCK - Minibrute Saw
PLUCK - Minibrute SineTri
PLUCK - Minibrute Square
PLUCK - Minibrute TriSaw
PLUCK - Minimoog Pulse Narrow
PLUCK - Minimoog Pulse Wide
PLUCK - Minimoog Saw
PLUCK - Minimoog Square
PLUCK - Minimoog Triangle
PLUCK - Minimoog TriSaw
PLUCK - Modern Saw Brite
PLUCK - Modern Saw Fat
PLUCK - Modern Square
PLUCK - Modern Sub
PLUCK - MonoPoly Pulse
PLUCK - MonoPoly Square
PLUCK - MonoPoly Triangle
PLUCK - Moog Modular Pulse
PLUCK - Moog Modular Saw
PLUCK - Moog Modular SineTri
PLUCK - Moog Modular Square
PLUCK - MS-20 Pulse
PLUCK - MS-20 Square
PLUCK - MS-20 Triangle
PLUCK - Muscle TriSaw
PLUCK - Nasal Symmetry
PLUCK - Nostalgic CPU
PLUCK - Numerology
PLUCK - OB-8 PWM
PLUCK - OB-8 Saw
PLUCK - OB-8 Triangle
PLUCK - OB-SEM PWM
PLUCK - OB-SEM Saw
PLUCK - OB-SEM Square
PLUCK - OB-X Saw
PLUCK - Odyssey PWM
PLUCK - Odyssey Saw

PLUCK - Organbells
PLUCK - OSCar Blown Square
PLUCK - OSCar Garbage Triangle
PLUCK - Plastic Bell
PLUCK - Polar Ambient 1
PLUCK - Polar Ambient 2
PLUCK - Polar Ambient 3
PLUCK - Polar Ambient 4
PLUCK - Polar Ambient 5
PLUCK - Polar Ambient 6
PLUCK - Polar Crisp 1
PLUCK - Polar Crisp 2
PLUCK - Polar Crisp 3
PLUCK - Polar Crisp 4
PLUCK - Polar Crisp 5
PLUCK - Polar Crisp 6
PLUCK - Primes
PLUCK - Prophet 12 Pulse
PLUCK - Prophet 12 Saw
PLUCK - Prophet 12 Square
PLUCK - Prophet 12 Triangle
PLUCK - Purity Bells
PLUCK - Schnoz
PLUCK - SE-1 Square
PLUCK - SH-101 Pulse
PLUCK - SH-101 Saw
PLUCK - SH-101 Square
PLUCK - SH-101 Squaw
PLUCK - SH-101 Sub
PLUCK - SID Saw
PLUCK - SID Square
PLUCK - Sidebands
PLUCK - Sine Dirt
PLUCK - Sine Distort
PLUCK - Sine Edge
PLUCK - Slinky
PLUCK - Soft Sliders
PLUCK - Solar Saw
PLUCK - Stripes
PLUCK - Sub Phatty Pulse
PLUCK - Sub Phatty Saw
PLUCK - Sub Phatty Square
PLUCK - Sub Phatty Triangle 1
PLUCK - Sub Phatty Triangle 2
PLUCK - Sub Phatty TriOverdrive
PLUCK - Sub Phatty TriSaw
PLUCK - Sunken
PLUCK - Synthetic Trance Saw
PLUCK - Synthetic Trance Square
PLUCK - Synthetic Trance Triangle
PLUCK - Synthetic Trance TriPulse
PLUCK - Table Organ 1
PLUCK - Table Organ 2
PLUCK - TB-303 Saw
PLUCK - TB-303 Square
PLUCK - Tepid FM
PLUCK - Tetra PWM
PLUCK - Tetra Saw
PLUCK - Tetra SawTri
PLUCK - Toadboy
PLUCK - Transfuse
PLUCK - Transistor Chimes
PLUCK - Vibey Bells
PLUCK - Virus PWM
PLUCK - Virus Saw
PLUCK - Virus SawSquare
PLUCK - Virus Sine
PLUCK - Virus Square
PLUCK - Virus Triangle
PLUCK - Voyager Saw Fat

PLUCK - Voyager Saw Narrow
PLUCK - Voyager Square Brite
PLUCK - Voyager Square Dark
PLUCK - VP VoxBox
PLUCK - VS Bellwaves
PLUCK - Wasp Saw
PLUCK - Whine
PLUCK - Whispy
PLUCK - White FM Bells
PLUCK - Wolfgang Bells

Textures Soundscape (61)

AMBI - Polar Evo Atonal Trem
AMBI - Polar Evo Atonal
AMBI - Polar Evo Aurora Tortion
AMBI - Polar Evo Aurora
AMBI - Polar Evo Boreal Formant
AMBI - Polar Evo Boreal
AMBI - Polar Evo Carbonite Tears
AMBI - Polar Evo Carbonite
AMBI - Polar Evo Caverns Glide
AMBI - Polar Evo Caverns
AMBI - Polar Evo Dante
AMBI - Polar Evo Existence
AMBI - Polar Evo Forgotten
AMBI - Polar Evo Galvanized
AMBI - Polar Evo Ibis
AMBI - Polar Evo Joule
AMBI - Polar Evo Medusae
AMBI - Polar Evo Raoult
AMBI - Polar Evo Species Xylem
AMBI - Polar Evo Species
AMBI - Polar Evo Terbium
AMBI - Polar Evo Vortex Glide
AMBI - Polar Evo Vortex
AMBI - Polar Evo Zooplankton X
AMBI - Polar Evo Zooplankton
AMBI - Polar Genesis Abyss
AMBI - Polar Genesis Atonal 3x
AMBI - Polar Genesis Atonal
AMBI - Polar Genesis Aurora
AMBI - Polar Genesis Boreal
AMBI - Polar Genesis Carbonite
AMBI - Polar Genesis Caverns
AMBI - Polar Genesis Dark Waters
AMBI - Polar Genesis Deep Cries
AMBI - Polar Genesis Depths 3x
AMBI - Polar Genesis Depths
AMBI - Polar Genesis Edenedge
AMBI - Polar Genesis Fjords
AMBI - Polar Genesis Generator
AMBI - Polar Genesis Hope
AMBI - Polar Genesis Horizon
AMBI - Polar Genesis Igneous
AMBI - Polar Genesis Jade
AMBI - Polar Genesis Krux
AMBI - Polar Genesis Liferays 3x
AMBI - Polar Genesis Liferays
AMBI - Polar Genesis Mourning 3x
AMBI - Polar Genesis Mourning
AMBI - Polar Genesis Naquettaer
AMBI - Polar Genesis Quda 3x
AMBI - Polar Genesis Rebirth
AMBI - Polar Genesis Relics 3x
AMBI - Polar Genesis Sunfall
AMBI - Polar Genesis Taiga
AMBI - Polar Genesis Tundra
AMBI - Polar Genesis Undercurrents 3x

AMBI - Polar Genesis Undercurrents
AMBI - Polar Genesis Vortex
AMBI - Polar Genesis Wayward
AMBI - Polar Genesis Whalecry
AMBI - Polar Genesis Zooplankton

Multi - Splits (17)

AMBI - Atonal Boreal Existence
AMBI - Aurora Carbonite Caverns
AMBI - Dark Fjords Mourning
AMBI - Forgotten Dante Abyss
AMBI - Jade Vortex Tundra
AMBI - Whalecry Rebirth at Sunfall
SPLIT - Colonies
SPLIT - Eastern Settlement
SPLIT - HMS Griper
SPLIT - Indigirka River
SPLIT - Lena River
SPLIT - Reaching Jan Mayen
TEX PAD - Chukchi Glaciér
TEX PAD - Endless Journeys
TEX PAD - Finding Ammassalik
TEX PAD - Lost in Barents Sea
TEX PAD - Point Barrow

Multi - Stacked (35)

BPM KEY - Azure Crystals
BPM KEY - Azure Substance
BPM KEY - Azure Vox Pulse
BPM PAD - Yenisei River
PAD - Barentsz Farthest North
PAD - Chancellor Searches
PAD - Davis Strait
PAD - Didrik Pning
PAD - Failure of Allday 1579
PAD - Frobisher Reaches Baffin Island
PAD - Greenlandia 1472
PAD - Hans Pothorst
PAD - Istoma
PAD - Murman Coast
PAD - Northeast Passage 1553
PAD - Novaya Zemlya
PAD - Richard and Hugh
PAD - Spitsbergen Discovery
PAD - Upernavik Arrival
PAD - White Sea 1496
PLUCK - Bells of Tintina
PLUCK - Cauchon Bells
PLUCK - Cherubs of Baffin
PLUCK - Crystal Ellef
PLUCK - Frigid Nueltin
PLUCK - Green Payuk
PLUCK - Heibergs Purity
PLUCK - Hollow Scimitar
PLUCK - Iridescent Chimes
PLUCK - Klack Guoich
PLUCK - Magnetic Vibrations
PLUCK - Memories of Senat
PLUCK - Plastic Crystals
PLUCK - Teslin Bells
PLUCK - Ukpik Ice

Custom Soundsources

Genesis Soundscapes - a creative series of explorative textures created from a variety of synth and nature sounds - processed through special creative reverbs and sound mangling tools.

Juno core waveforms - samples include noise, PWM (at 4 different settings), saw, saw sub, square sub, and sub.

Prophet 12 "DuoWave" waveforms. Dual matching waveforms were sampled at various pitches to provide for massive Prophet 12 sounds. Explores all the core waveforms and base wavetables and low and high samples (providing for bass and pad usage).

Field recordings like metal attacks - found in the "Ice" patches as well as a processed vocal nature effect called Voiceberg - found in all the "Shores" patches.

Fun facts and tips

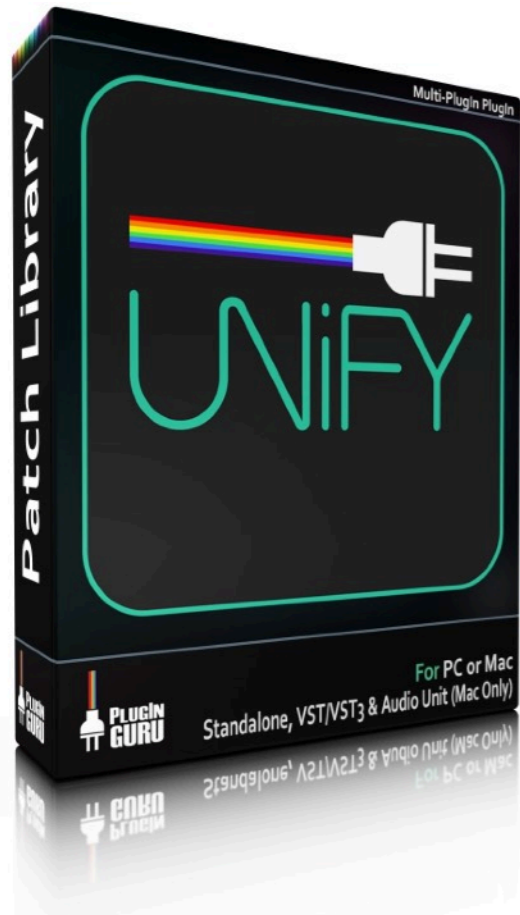
Where did you find these patch names? When I created the original Polar Ice collection for Omnisphere 1, I named each pad after the factory synth sound source they were based on. This was a bit drab to me and I decided I wanted to give each pad (and there are so many of them!) a unique name that would give them their own identity and character. I scoured Google Maps and found names from all over Canada and other polar regions. Many are indigenous names for locations and natural features in Canada - and most are fun to try to pronounce.

Why so many pads? I wanted to create a pad for every single synth sound source found in Omnisphere.

Why so many plucks? I wanted to create usable plucks for every single synth waveform (not the samples) found in Omnisphere.

Why are they not many BPM patches? Actually, almost all of the patches have special ARP patterns ready to play. Head over to the arp page and turn on the power button. I could have saved each one as a BPM version - but a 2k patch collection is even excessive for me!

Why did you call it Polar Ice X? This collection took over a year to create. I decided I wanted to go back to one of my original collections and totally reinvent it. After releasing so many Omnisphere (and MainStage) collections, I have raised my sound design skills. Polar Ice always had my heart as it was one of my first releases (besides Northern Lights) and I wanted to go back and fix all my mistakes- but also make each patch sound better. Polar Plucks was added (and also revamped) and was a perfect companion to all the pads, bell pads and orb pads. This led me to add more new sounds and samples - resulting in a collection of Ambiences and basses that could each be their own unique collection. The leads were also something I wanted to explore and include to round out this massive collection. It is e**X**treme, it's e**X**plorative, it's e**X**citing, and yes, it is e**X**cessive! It had to be Polar Ice **X**!



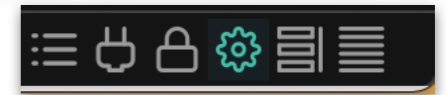
Polar Ice X - Unify Enhanced

Unify is a revolutionary new type of instrument that lets you layer, play, and combine AU, VST, or VST3 plug-ins to create new, inspiring, and outrageously creative sounds. Not only can you load your own plug-ins, but Unify also ships with its own built-in library of virtual instruments and audio effects, making it immediately ready to use right "out of the box".

Latest Unify manual - <https://pluginguru.net/unify/manual/>

Polar Ice X includes a special .guru file located in the Unify Install folder of your download.

To install, **FIRST make sure you have properly installed the .omnisphere master collection** - if you do not do this you will get errors with missing sound sources. Once installed, open up Unify (screen shot shows standalone version). Click on the gear icon to open up the setup menu

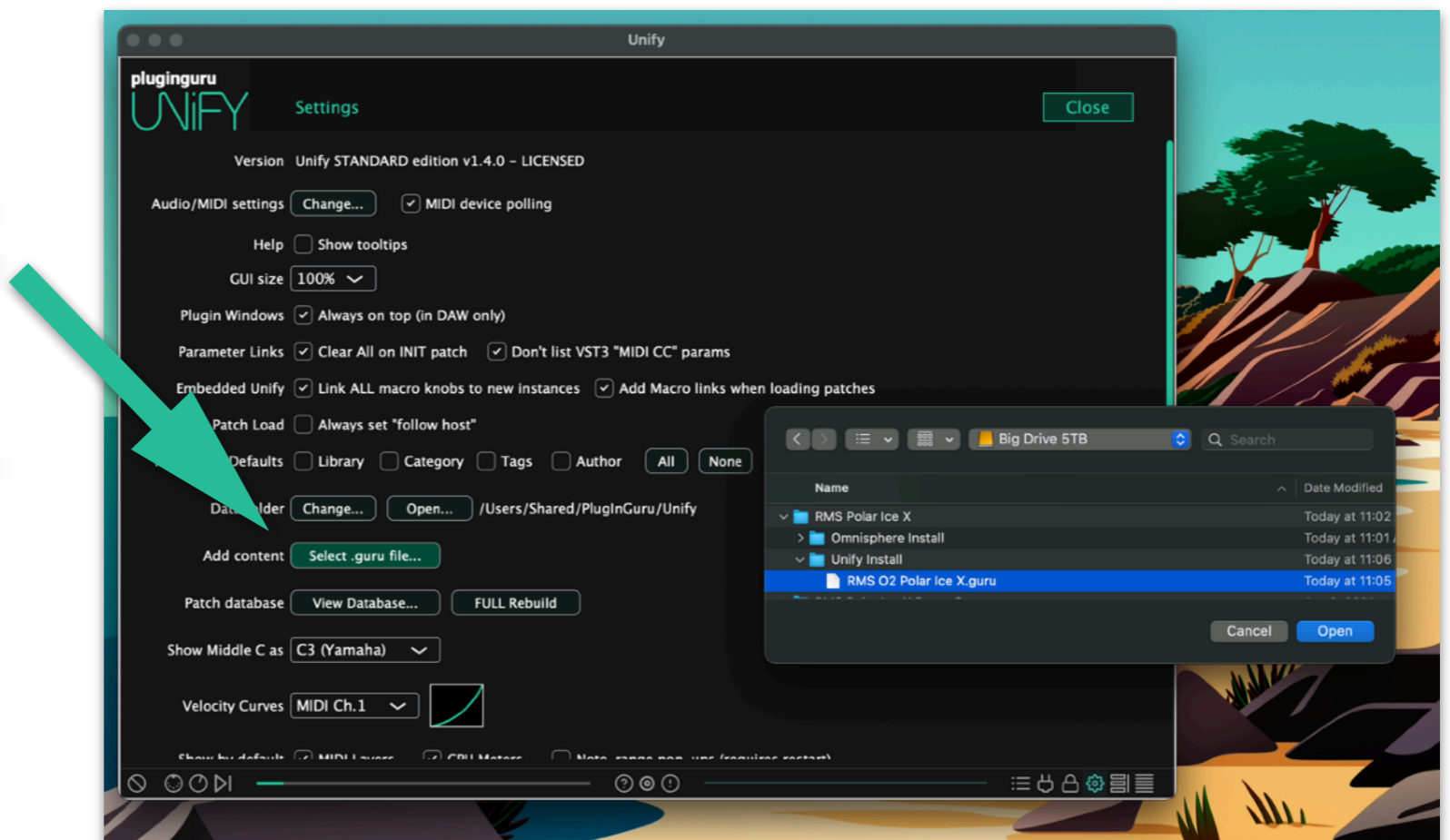


Click on the green "Select .guru file..."

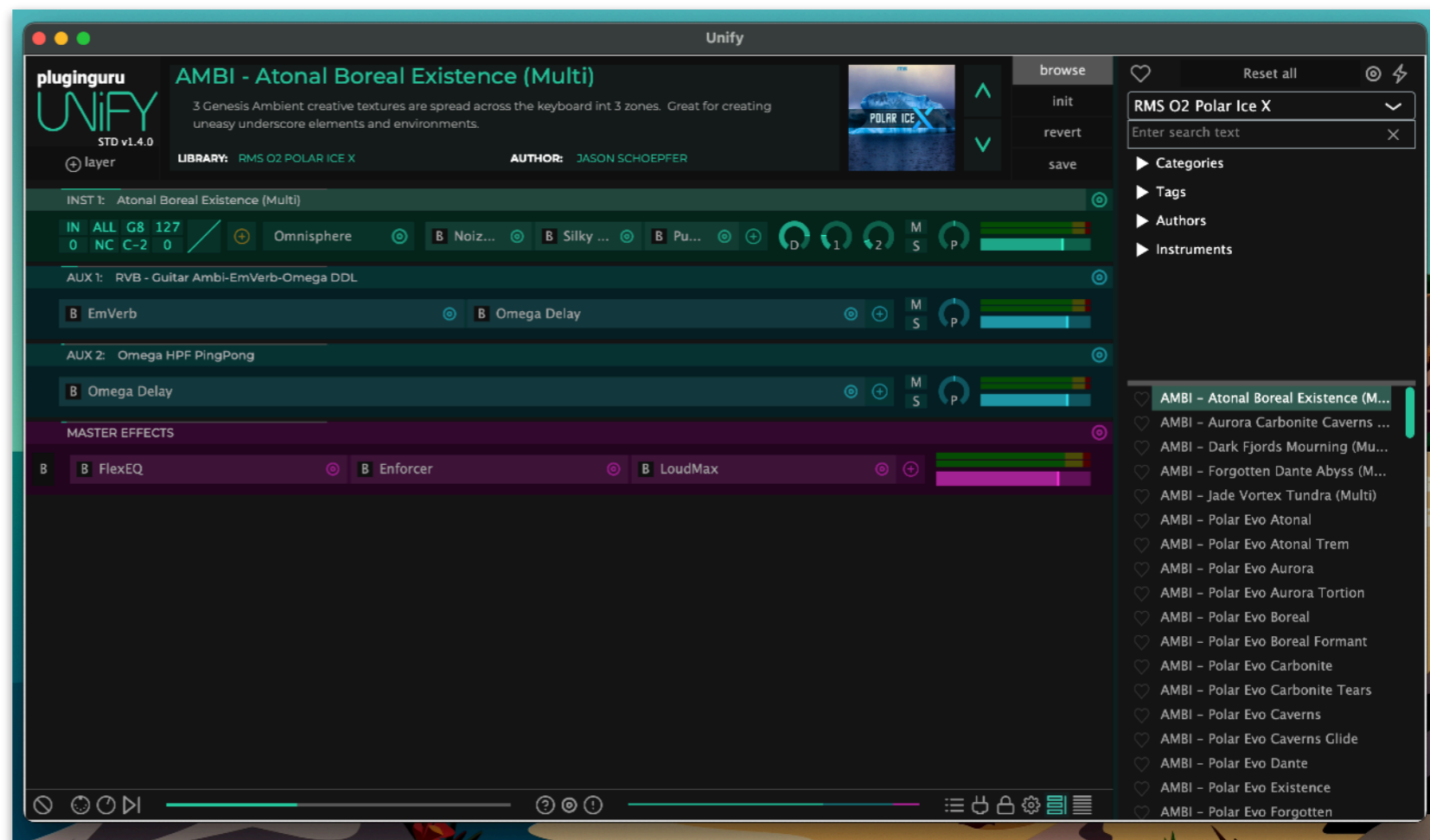
Navigate to the RMS Polar Ice X Unify Install folder and select **RMS O2 Polar Ice X.guru**

Follow on-screen instructions.

You have now installed the Unified version of Polar Ice X and can now easily enjoy every patch and multi found in the standalone Omnisphere version.



There are over 1100 sounds in the Unify Enhanced version. Each sound is mapped to the modwheel (aftertouch is also utilized in many of the patches). If you click on the Omnisphere instrument box- this will open up Omnisphere. You can explore the sounds and discover the programmed ARP patterns that each Polar Ice X patch has (actually doubles the usable patch count).



Clicking on the macro knob icon will open up the macro knob panel - where each Polar Ice X patch is mapped to creative FX like distortion, chorus, Pump House, reverb and delay. Explore these knobs as they can transform each sound in new and exciting ways (my personal favourite is Pump House - turn up the Pump Depth knob and enjoy!)



There are special bonus patches found only in the Unify Enhanced version of Polar Ice X - each one starts with a “z” and provide new combinations or take advantage of Unify’s CPU load-balancing feature to provide better performance with the original Omnisphere Multis.

59 bonus patches are waiting for you to explore. Check out the piano layers using a modified version of the factory Unify piano.

Easily combine patches together by SHIFT-CLICKING on new patches to insert the full Unify patch - with proper macro mapping. It is an endless sonic exploration waiting for you dive in! ENJOY!



UNIFY Bonus Patches (59)

zAMBI - Atonal Boreal Existence
 zAMBI - Aurora Carbonite Caverns
 zAMBI - Dark Fjords Mourning
 zAMBI - Forgotten Dante Abyss
 zAMBI - Jade Vortex Tundra
 zAMBI - Whalecry Rebirth at Sunfall
 zBPM KEY - Azure Crystals
 zBPM KEY - Azure Substance
 zBPM KEY - Azure Vox Pulse
 zBPM PAD - Yenisei River
 zKEY - Icebergs Passage
 zKEY - Piano on Aishihik Shores
 zKEY - Piano on Arctic Passage

zKEY - Piano on Ashuanipi Shores
 zKEY - Piano on Baffin Shores
 zKEY - Piano on Ice Crystals
 zKEY - Polar Piano
 zPAD - Barentsz Farthest North
 zPAD - Chancellor Searches
 zPAD - Davis Strait
 zPAD - Didrik Pnning
 zPAD - Failure of Allday 1579
 zPAD - Frobisher Reaches Baffin Island
 zPAD - Greenlandia 1472
 zPAD - Hans Pothorst
 zPAD - Istoma
 zPAD - Murman Coast
 zPAD - Northeast Passage 1553

zPAD - Novaya Zemlya
 zPAD - Richard and Hugh
 zPAD - Spitsbergen Discovery
 zPAD - Upernavik Arrival
 zPAD - White Sea 1496
 zPLUCK - Bells of Tintina
 zPLUCK - Cauchon Bells
 zPLUCK - Cherubs of Baffin
 zPLUCK - Crystal Ellef
 zPLUCK - Frigid Nueltin
 zPLUCK - Green Payuk
 zPLUCK - Heibergs Purity
 zPLUCK - Hollow Scimitar
 zPLUCK - Iridescent Chimes
 zPLUCK - Klack Guoich
 zPLUCK - Magnetic Vibrations

zPLUCK - Memories of Senat
 zPLUCK - Plastic Crystals
 zPLUCK - Teslin Bells
 zPLUCK - Ukpik Ice
 zSPLIT - Colonies
 zSPLIT - Eastern Settlement
 zSPLIT - HMS Griper
 zSPLIT - Indigirka River
 zSPLIT - Lena River
 zSPLIT - Reaching Jan Mayen
 zTEX PAD - Chukchi Glacier
 zTEX PAD - Endless Journeys
 zTEX PAD - Finding Ammassalik
 zTEX PAD - Lost in Barents Sea
 zTEX PAD - Point Barrow

LICENSE AGREEMENT:

- I. ALL LICENSES ARE SINGLE-USER LICENSES.
- II. THE CONTENTS OF THIS SOUNDSET IS LICENSED AND NOT SOLD TO YOU.
- III. OWNERSHIP REMAINS WITH ROCKY MOUNTAIN SOUNDS.
- IV. ALL RIGHTS OF THE PRODUCER AND THE OWNER OF THE WORK ARE RESERVED.
- V. UNAUTHORISED DUPLICATION OF ANY DOWNLOAD IS A VIOLATION OF APPLICABLE LAWS.
- VI. YOU MAY NOT DISTRIBUTE, SHARE, SUBLICENSE, LEND, LEASE OR OTHERWISE MAKE THE SOUNDSET CONTENT AVAILABLE TO ANY THIRD PARTY.
- VII. YOU MAY USE THE CONTENT OF THIS SOUNDSET IN YOUR OWN COMMERCIAL AND NON-COMMERCIAL PRODUCTIONS.
- VIII. THE INCLUDED SOUNDSOURCES CANNOT BE USED TO CREATE NEW COMMERCIAL PRESET RELEASES.
- IX. INSTALLING THESE PRODUCTS CONSTITUTES AN AGREEMENT TO THE TERMS



rms

ROCKY MOUNTAIN SOUNDS

www.rockymountainsounds.com